



Extraordinary Solutions

PupProtect add-on Puppy Panel Discreet. Safe. Affordable.

- Discreet design is practically invisible against your landscape avoiding the busy look of other puppy panels.
- Perfect add-on solution for existing fences or in lieu of expensive ornamental puppy panel fence sections.
- Designs to fit most major manufacturers' 5/8" and 3/4" picket ornamental fencing.
- Pet safe powder coating over galvanized steel for long life.
- 8 Year Limited Warranty. See certificate for details.



Visit us online at **PupProtect.com** for instructions, current specifications, drawings and warranty information.

PupProtect™ add-on Puppy Panel

The panel pet-lovers love

Available at:



NOTICE - READ BEFORE PURCHASE:

WARNING: This or similar products, should not be added to a "pool fence" as they will make most pool barriers NON-CODE Compliant. Not all pets can be trained for containment. Larsen Innovations LLC CANNOT guarantee that the panel will contain a pet in all cases. If for any reason you believe that your pet could pose a danger to himself or others if it were able to breach the panel you should not rely exclusively on the panel for containment. In ALL cases pets should be monitored when first introduced to the enclosure using the panel. Larsen Innovations LLC shall NOT be liable for any property damage, economic loss or consequential damages sustained as a result of any animal breaching the system. If you are unsure whether this is appropriate for your pet please consult your veterinarian or certified trainer.

 **LARSEN INNOVATIONS, LLC**

© Larsen Innovations LLC 2016



Patent Pending

PupProtect Puppy Panels — because pets are family.



Offset installation can bridge the lower rail to fill in the gap on extended picket sections.



Panel can be racked up to 25° to fit biased panels.



Uncompromised design, at an affordable price.

DISCREET

Unobtrusive design doesn't detract from the appearance of your fence.

CLIMB RESISTANT

Minimizing the number of horizontal footholds reduces the possibility of climbing.

STRONG

4 gauge (5.75mm) steel wire horizontals and 8 gauge (4.15mm) steel wire pickets in styles to fit most standard fence panels.

DURABLE

All welded construction uses steel that is both galvanized and powder coated for a long life.

ADAPTABLE

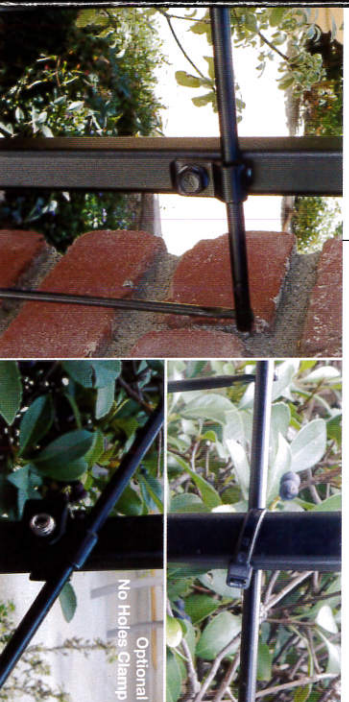
Offset design permits the picket to bridge an elevated bottom rail to protect under the rail as well as above, eliminating the cost and clutter of add on parts to fill the gaps.

AFFORDABLE

PupProtect puppy panels are the industry's **BEST VALUE!**

EASY

Simple installation with provided clips and self-tapping stainless screws (recommended installation). Alternatively use the provided UV resistant zip ties or the optional set screw clamp.



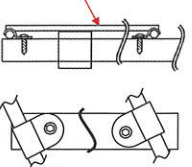
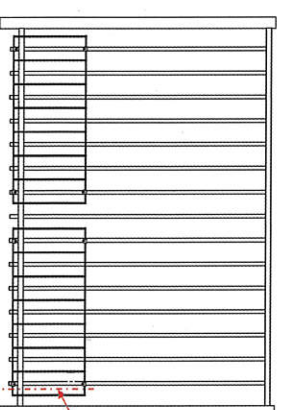
In addition to slipping through wide gaps many pets learn to climb meshes with frequent cross bars.



Light meshes such as hardware cloth and poultry netting are easily broken leaving sharp points and require frequent replacement.



PupProtect add-on panels are made up of two sections with attachment clips (8) at the corners.



Note: Consult your fence manufacturer's warranty for any requirements or warranty exclusions on cutting or screwing into your panels.